



Systems Overview

Magellan New Provider Orientation

Magellan
HEALTHCARE.

Agenda

- » MagellanofIdaho.com website
- » Availity Essentials
- » Magellan's authorization system via Availity Essentials
- » Patient outcomes management system via Availity Essentials
- » Articulate Reach Learning Management System (LMS)

MagellanofIdaho.com website

The types of information and support you can find include:

Getting started

- Joining the Magellan network

Provider handbook and IBHP handbook supplement

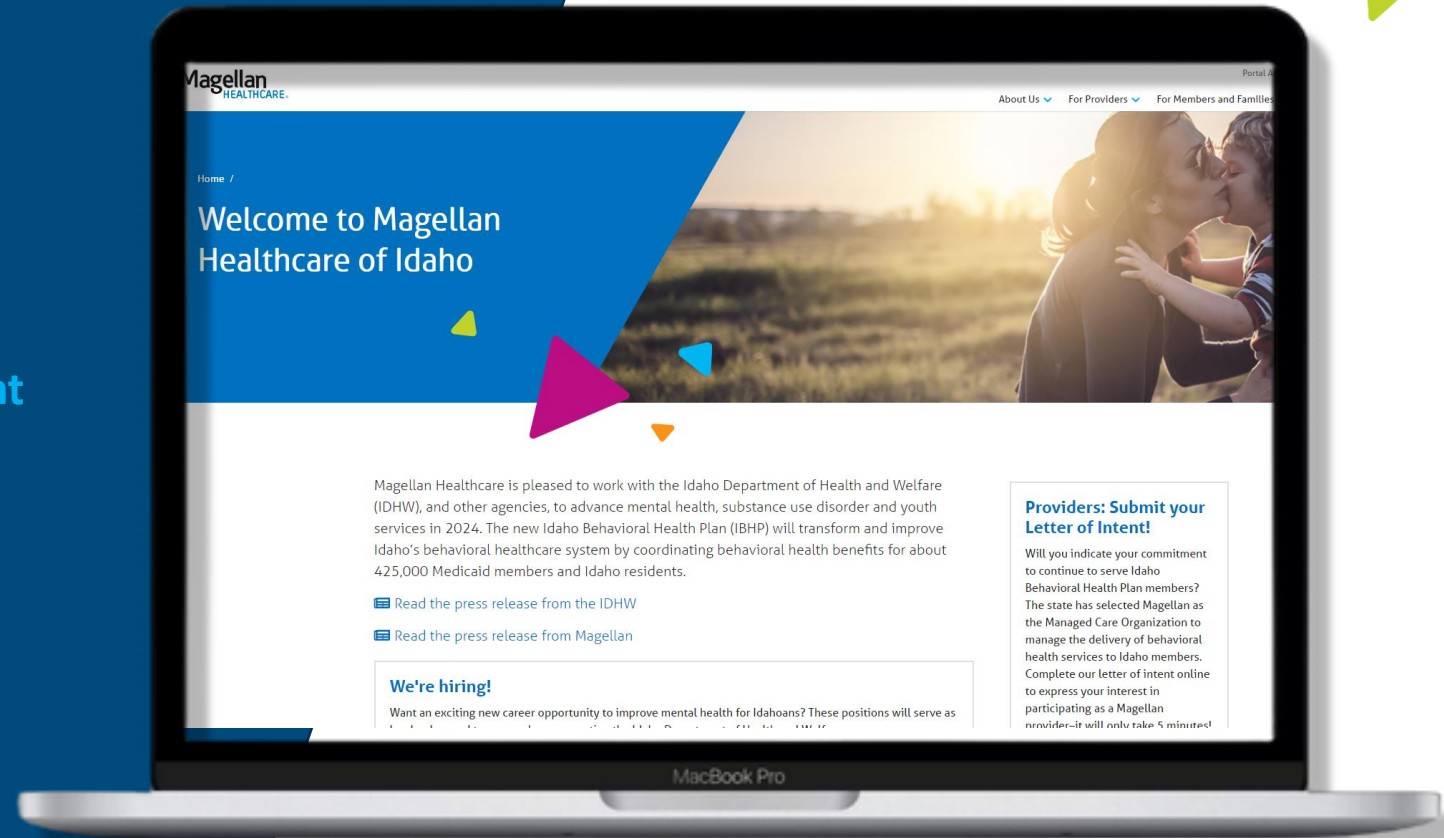
- Contractual expectations
- Credentialing and recredentialing
- Regulatory requirements
- Quality partnership
- Provider reimbursement and claims

Forms

- Including consent to release protected health information (PHI)

Programs and services

- Including Youth Empowerment Services (YES)



[Welcome to Magellan Healthcare of Idaho](#)

MagellanofIdaho.com website (cont.)

Providing care

- Clinical guidelines such as evidence-based practice requirements and clinical practice guidelines
- How to check eligibility, benefits and services covered by state funds

Getting paid

- Including submitting claims, billing codes, and clearinghouses

Member resources

- Including information on emergency contacts, community referrals, and eligibility and benefits information

Provider news and communications

- Trainings and webinars
- Special events
- Provider newsletter
- Provider communications
- Press releases



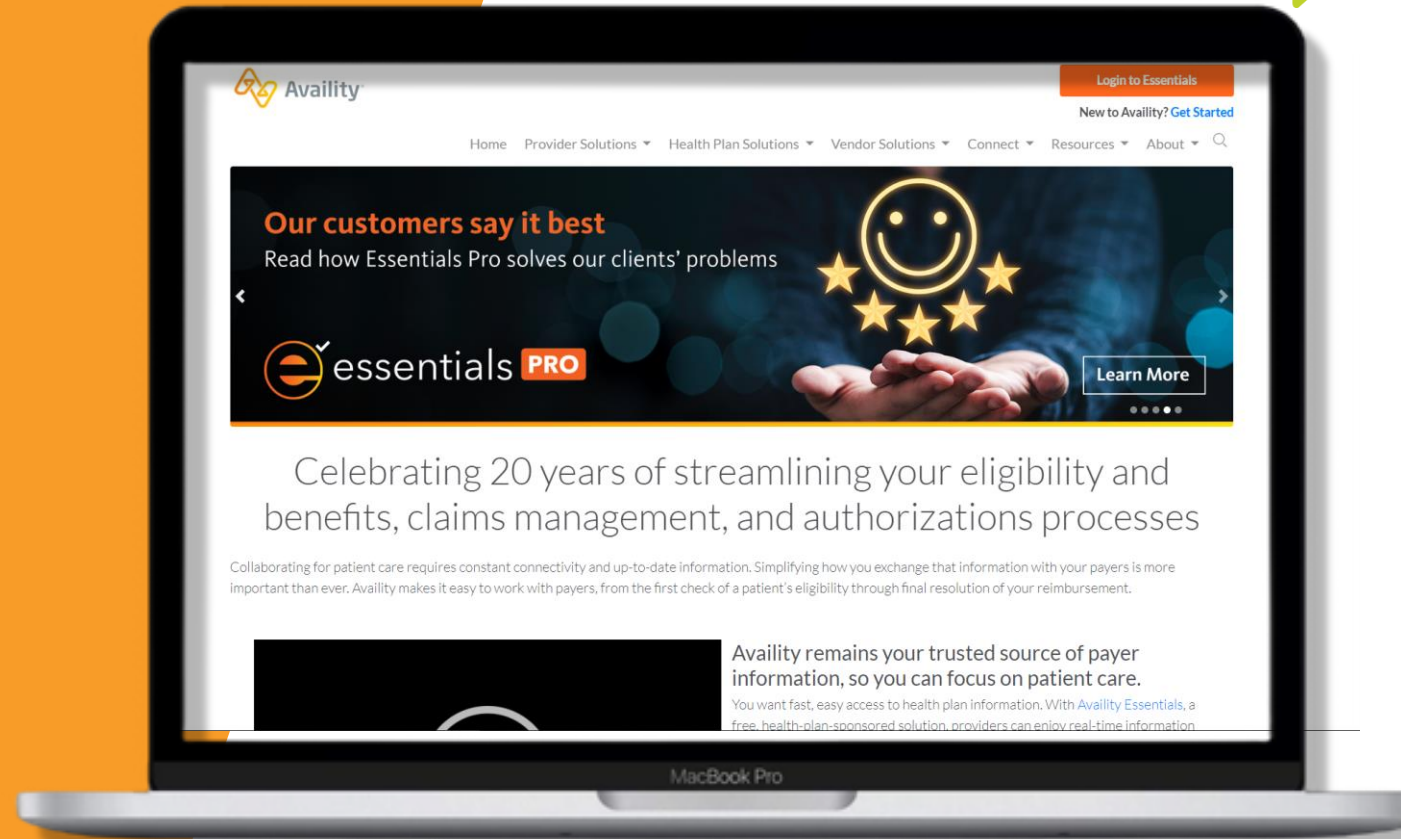
[Welcome to Magellan Healthcare of Idaho](https://www.magellanidaho.com/)

Availity Essentials

» This free provider portal is a **secure gateway** (website) to tools and allows near-real-time access to payer information.

It grants you the ability to:

- Obtain member eligibility and benefit information
- Submit a claim
- Check claim status
- View/print remittance advice, and more



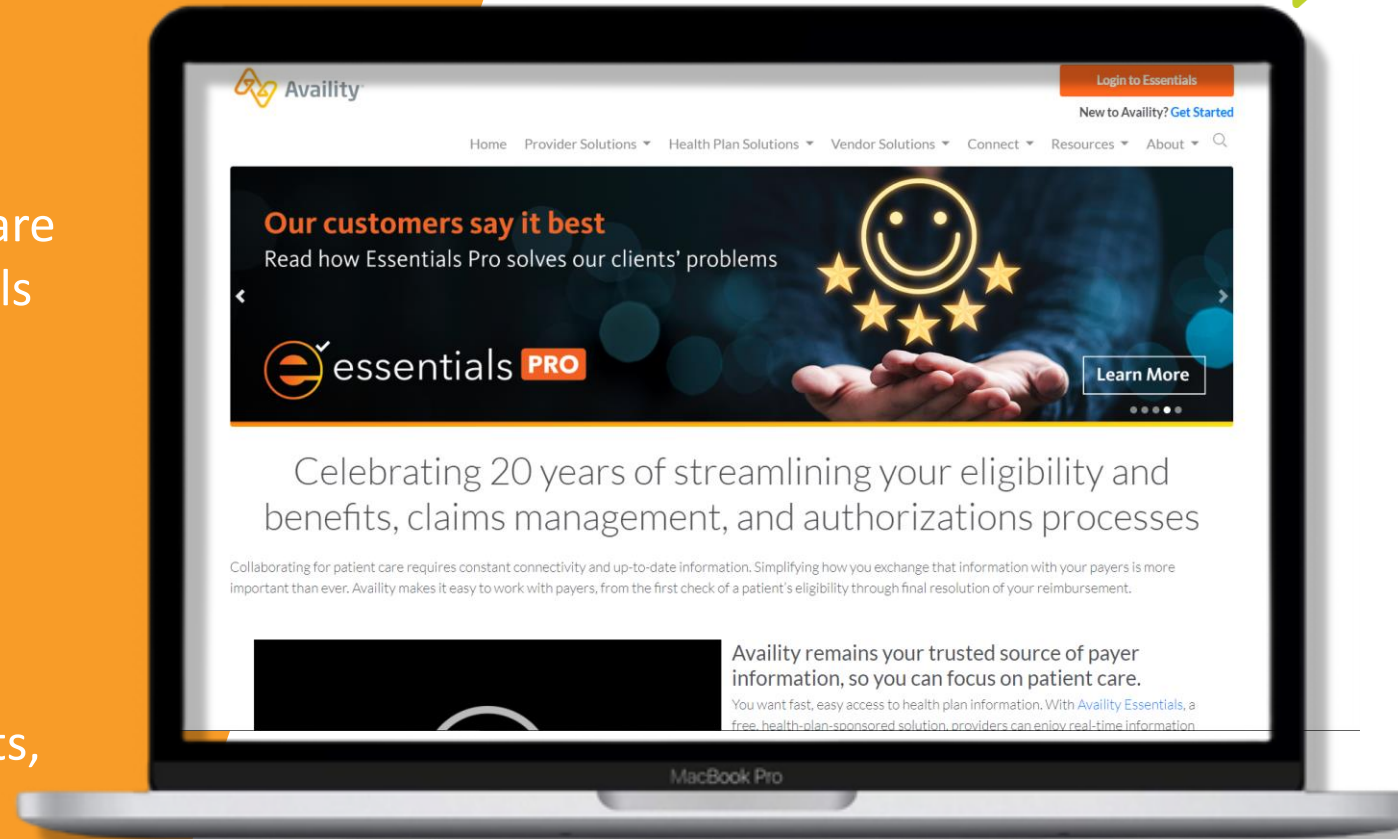
www.availity.com

Availity Essentials (cont.)

» Within Availity Essentials, providers can easily access Magellan-specific content/secure applications via links on our Magellan Healthcare of Idaho “Payer Space” within Availity Essentials

This includes tasks such as:

- Submitting and viewing authorizations
- Submitting updates to your practice information
- Submitting appeals
- Submitting and accessing CANS assessments, and more



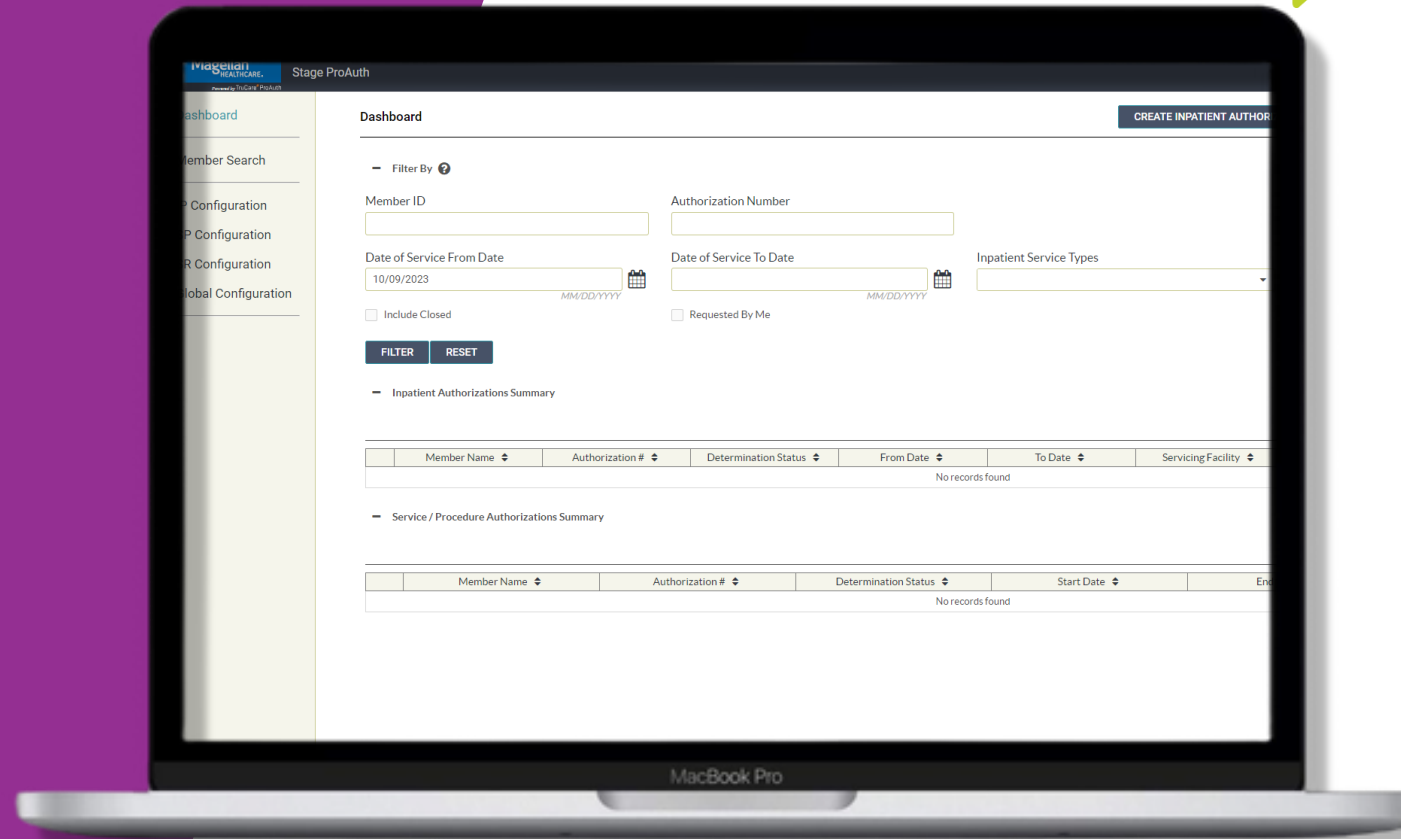
www.availity.com

Magellan's authorization system

» Magellan's authorization system (accessed via Availity Essentials) is an interactive digital service authorization and service registration management tool that streamlines the prior authorization process, thus eliminating:

- Faxes and phone calls
- Administrative burden for in-network providers

» Magellan's system allows all authorizations to be submitted electronically 24/7/365.

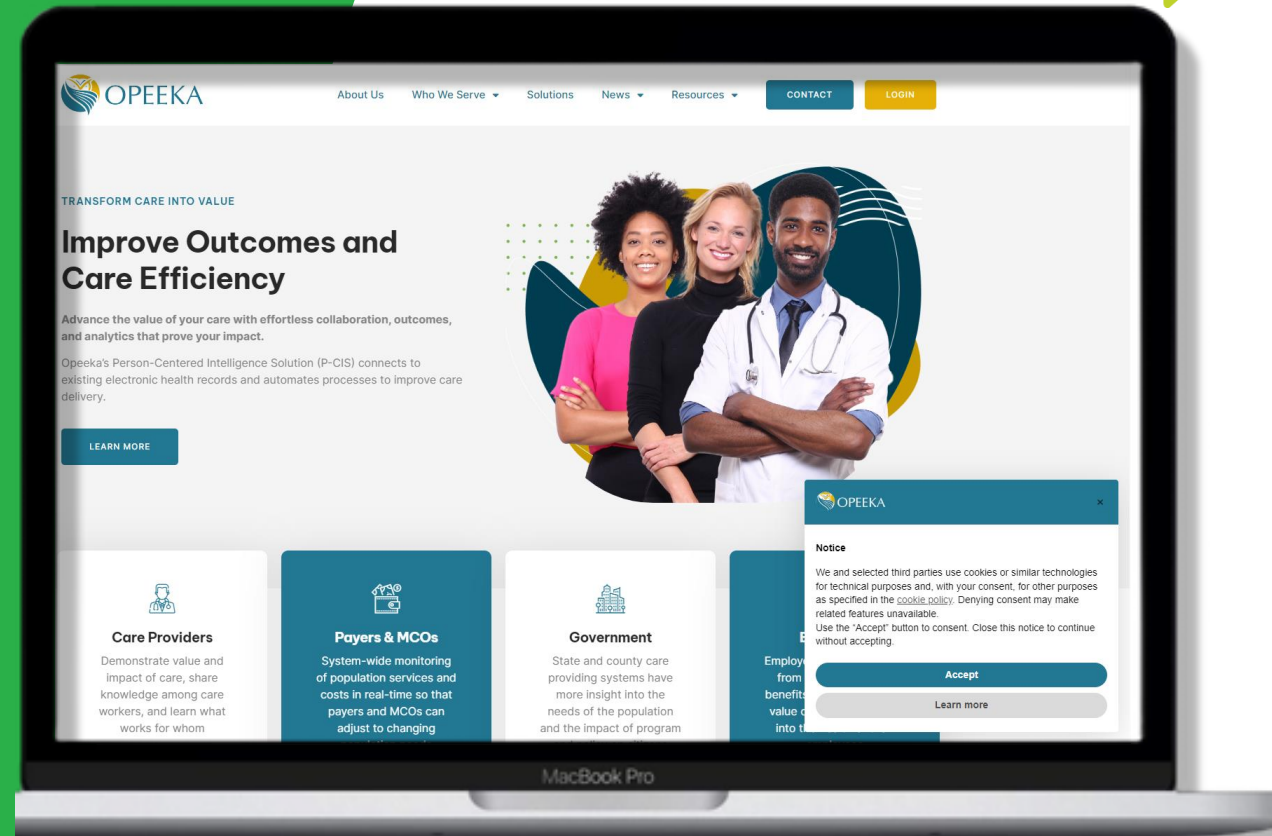


Outcomes and assessments system

» Magellan's outcomes and assessments system (accessed via Availity Essentials) allows for patient assessments and other member information to be gathered and managed, and allows for data sharing for members, families, providers, and Magellan staff.

You will have access to assessments, like:

- The Child and Adolescent Needs and Strengths (CANS)
- The Adult Needs and Strengths Assessment (ANSA)
- The Idaho Behavioral Health Assessment



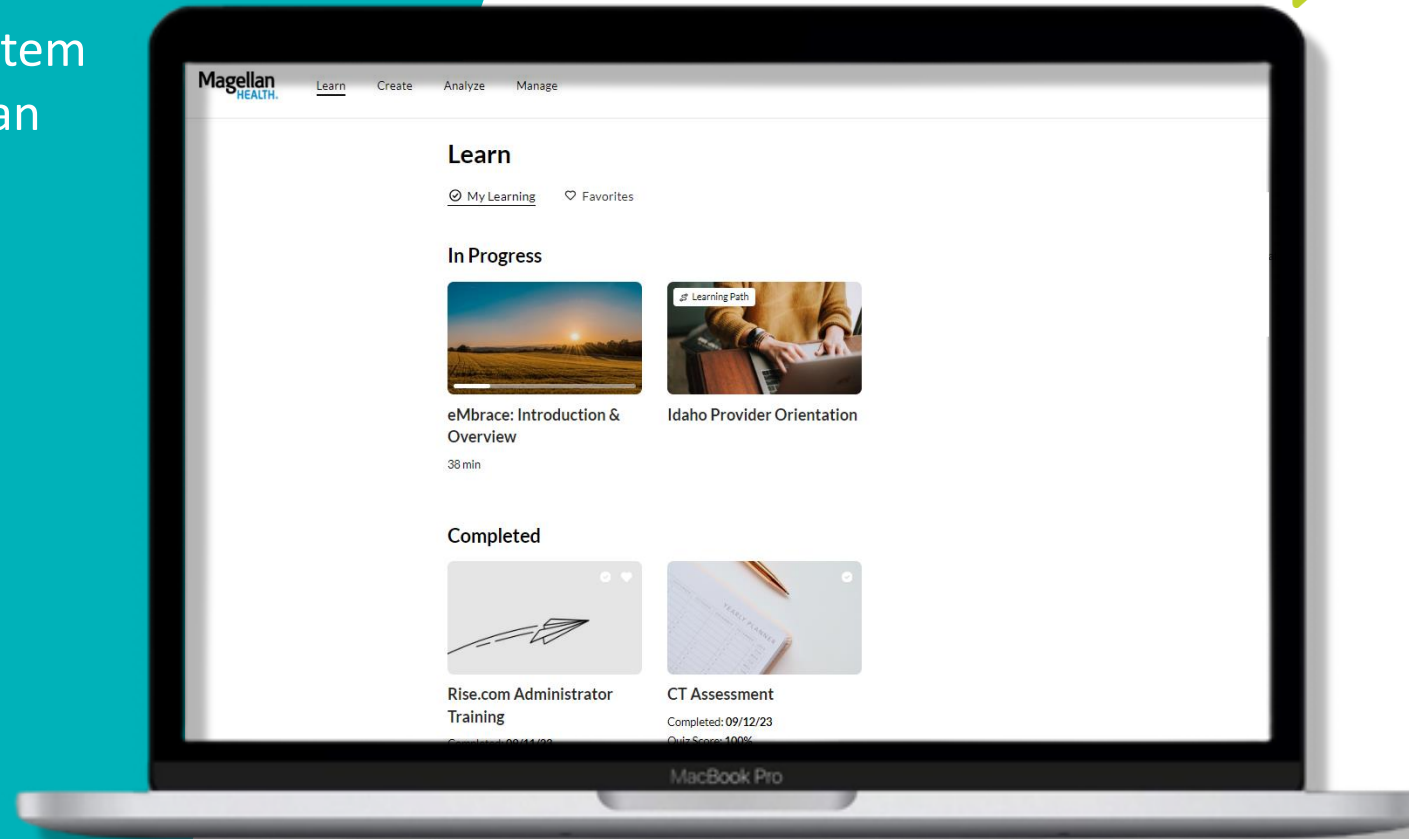
Articulate Reach learning management system (LMS)

» Articulate Reach is a learning management system used to distribute provider training for Magellan Healthcare of Idaho, including Magellan's new provider orientation, annual training, and on-demand trainings.

» Depending on the services you provide, you may be assigned a service-specific learning path with additional required courses.

» Articulate Reach will track your progress and automatically issue an electronic certificate of completion when you complete a course.

» Magellan uses course completion reports from Articulate Reach to ensure training compliance.



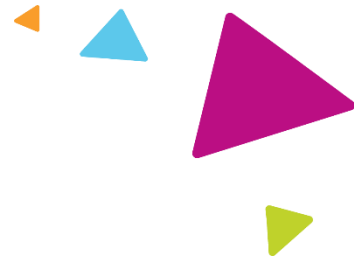
[Magellan Healthcare of Idaho Learning Management System](#)



Thank you

Magellan
HEALTHCARE®

Legal



The information presented in this presentation is confidential and expected to be used solely in support of the delivery of services to Magellan members. By receipt of this presentation, each recipient agrees that the information contained herein will be kept confidential and that the information will not be photocopied, reproduced, or distributed to or disclosed to others at any time without the prior written consent of Magellan Health, Inc., a subsidiary of Centene Corporation.

The information contained in this presentation is intended for educational purposes only and should not be considered legal advice. Recipients are encouraged to obtain legal guidance from their own legal advisors.