



# Member Transitions

---

*Idaho Provider Training*



# Agenda

---

» Welcome & introductions

» The Magellan approach

» Member transition planning

A decorative border at the bottom of the slide consists of several colorful triangles in shades of orange, light blue, green, and yellow, scattered across the white background.

**Magellan**  
HEALTHCARE®

# Meet your Magellan team

## Clinical

---

Rebecca Mutchler, LCSW

*Senior Director,  
Business Development, Clinical*

Julie Carlson, LMHC, LMSW, CADAC

*Senior Director,  
Integrated Health*

Jennifer Bly, RN

*Director,  
Clinical/Care Navigation*

Julia Brillhart, RSN, MSN

*Magellan Consultant*

## Provider Training

---

Heather McCollum, LCSW

*Director, Learning & Development*

Katherine Powers, LCSW

*Clinical Trainer*

Lea Bush, LCSW

*Clinical Trainer*

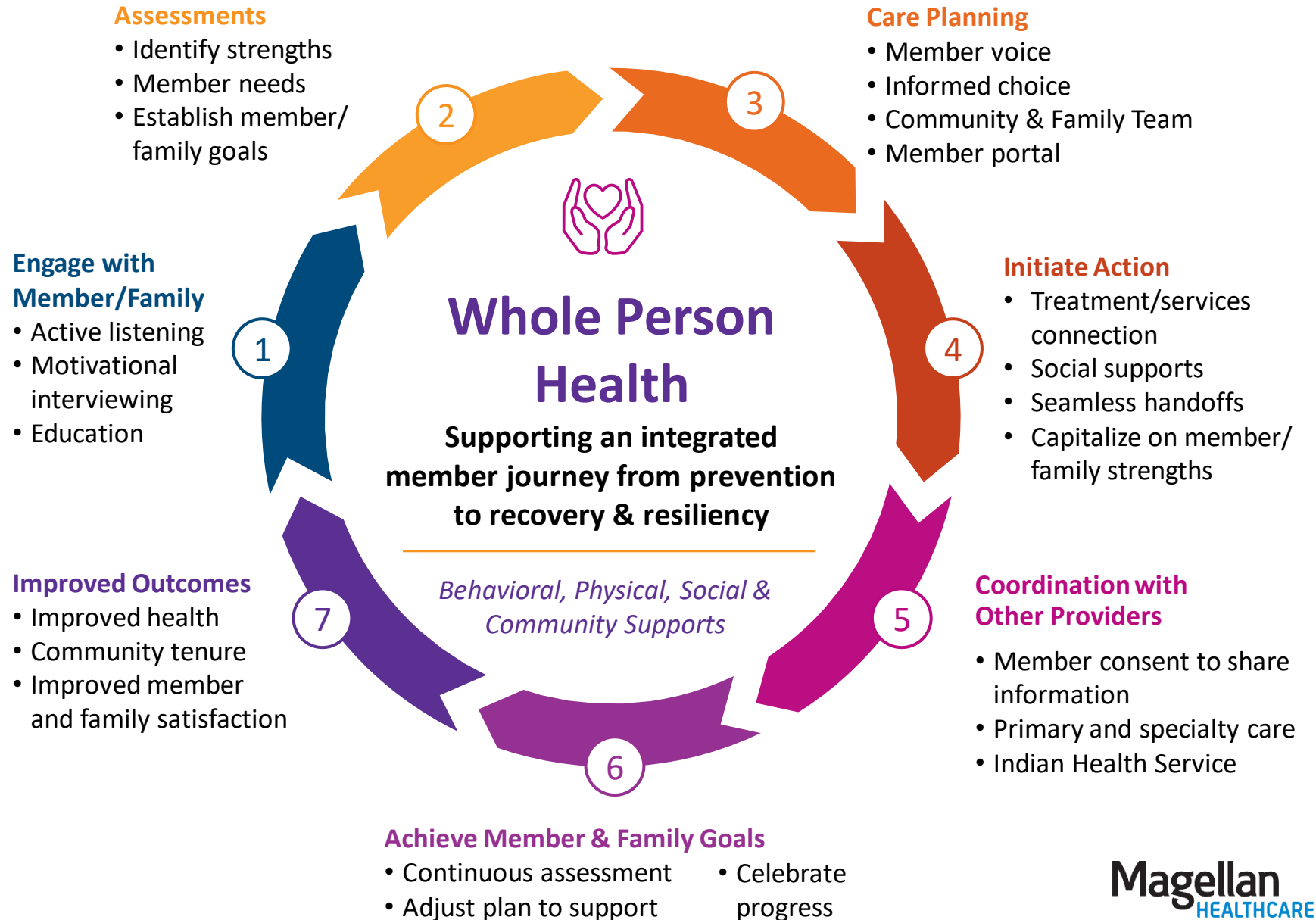
Brett Judd, LCSW

*Clinical Trainer*



# Magellan's approach to member care

- ✓ Contact Center
- ✓ Crisis
- ✓ Providers/PCPs
- ✓ Member Data Stratification
- ✓ Clinical Care Team
- ✓ Stakeholder
- ✓ Emergency Responders
- ✓ Emergency Department

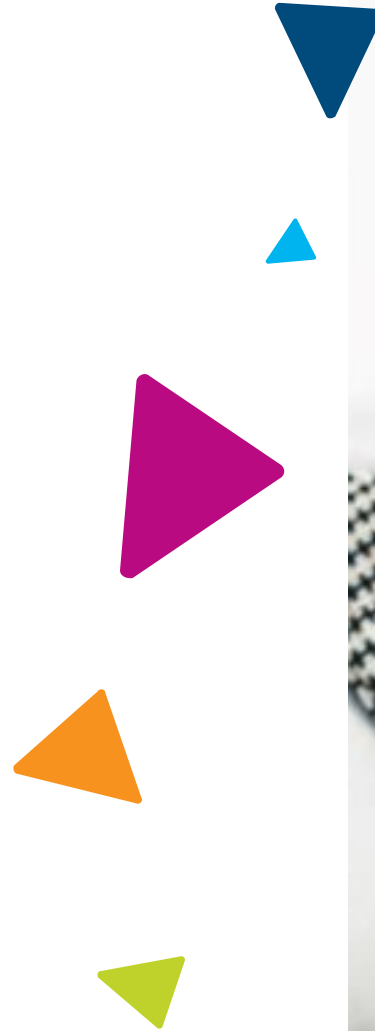


# Member transition planning

## Continuity of care and seamless transition for members and families

---

- ✓ Identify Medicaid members and other eligible members in advance of program implementation (July 1, 2024)
- ✓ Participate in treatment, care and discharge planning with treatment team, member and families
  - Inpatient and SUD residential - 30 days prior to implementation date.
  - Children's PRTF and RTC - 60 days prior to implementation date.



# Member transition planning (cont.)

## Continuity of care and seamless transition for members and families

---

- ✓ Magellan will honor authorizations beyond July 1, 2024
- ✓ Collaborate with IDHW and other vendors to integrate existing clinical documents into Magellan's clinical platform
- ✓ Assign Magellan Clinical team members to specific facilities
- ✓ Send new member packets with information about Magellan and the IBHP to all members



# Thank You!

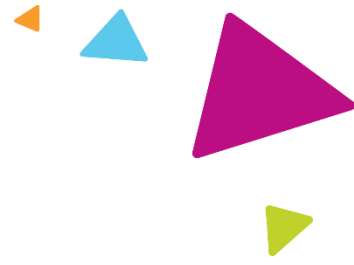
---

QUESTIONS?

**Magellan**  
HEALTHCARE®



# Legal



*The information presented in this presentation is confidential and expected to be used solely in support of the delivery of services to Magellan members. By receipt of this presentation, each recipient agrees that the information contained herein will be kept confidential and that the information will not be photocopied, reproduced, or distributed to or disclosed to others at any time without the prior written consent of Magellan Health, Inc., a subsidiary of Centene Corporation.*

*The information contained in this presentation is intended for educational purposes only and should not be considered legal advice. Recipients are encouraged to obtain legal guidance from their own legal advisors.*